

# Manual

## How to make SD card animations

1. This program only support SD card with FAT32 format. If you buy new SD card, please reformat to FAT32 first.

How to format the new SD card:

1. Plug your new SD card onto your computer
2. Click the SD card file on the right mouse and select "Format"
3. Select "FAT32" and start to format the SD card

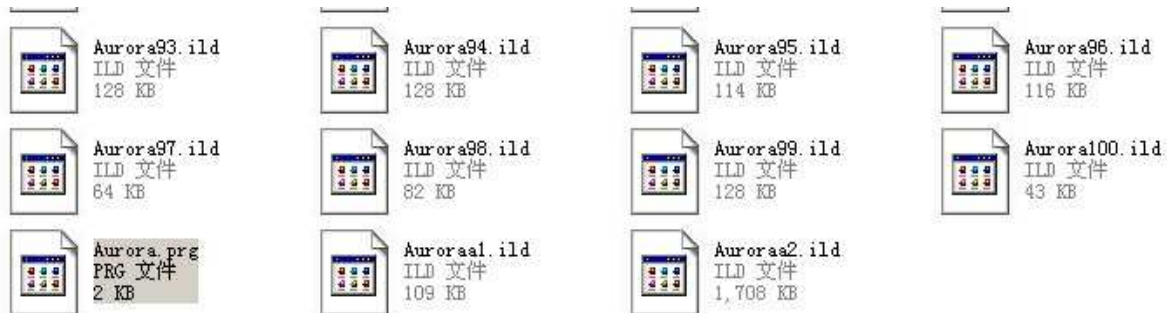
2. File name is suggested to have less than 8 letters and 3 letters for the format name.

3. It is suggested to use the SD card only for the laser light. Please do not put other documents into the SD card. This SD card can be put 100 folders and each folder can be put 256 files.

4. After you get our SD card, please plug it onto your computer. Then you will see 3 folders:



Open the first folder, you will see 102 ".ild" files and 1 ".prg" file



Double click the "Aurora.prg" file and select "Microsoft Office Word" to open this .prg file.

You will see all the 102 files' name are listed on this "Aurora.prg" file. Every file is equal to one animation displayed in this laser.

```
Aurora97.ild, 10, 3↵  
Aurora98.ild, 10, 2↵  
Aurora99.ild, 10, 2↵  
Auroraa1.ild, 10, 3↵  
Auroraa2.ild, 5, 1↵
```

What does it mean on this file name? e.g.

**Aurora3.ild, 18, 1**

1. "Aurora3.ild" means the file name of your ilda animation
2. "18" means the displaying scanning speed
3. "1" means the displaying time: 1 time

5. How to make your own folder with your own animations?

- (1). Use your own laser software to create ".ild" files. Your laser software must support export ".ild" file.
- (2). Use our free laser software to create ".ild" files. Please send email if you need our free laser software.

Steps on how to create your own animations with our free laser software:

- A. Install the software onto your computer
- B. If you have a picture, such as "Disco" on your computer

# Disco

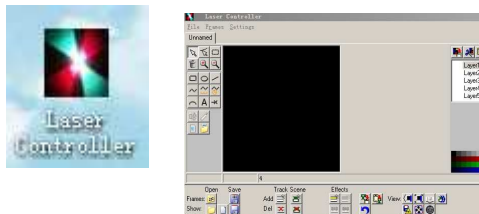
- C. Open the Photoshop on your desk, and open the "Disco.jpeg" picture



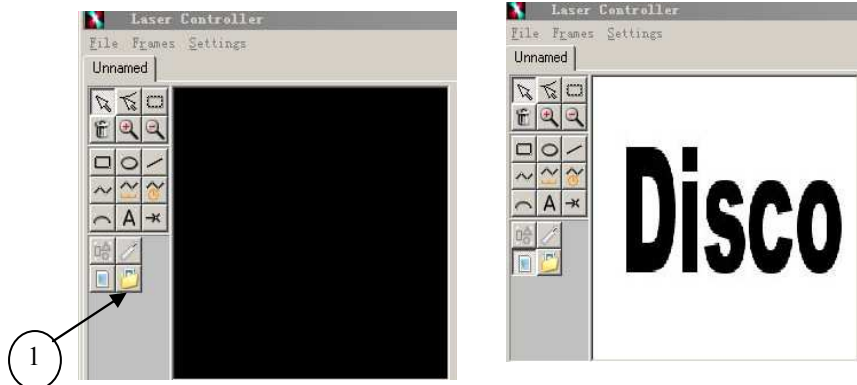
- D. Save this "Disco.jpeg" picture to "Disco.bmp"



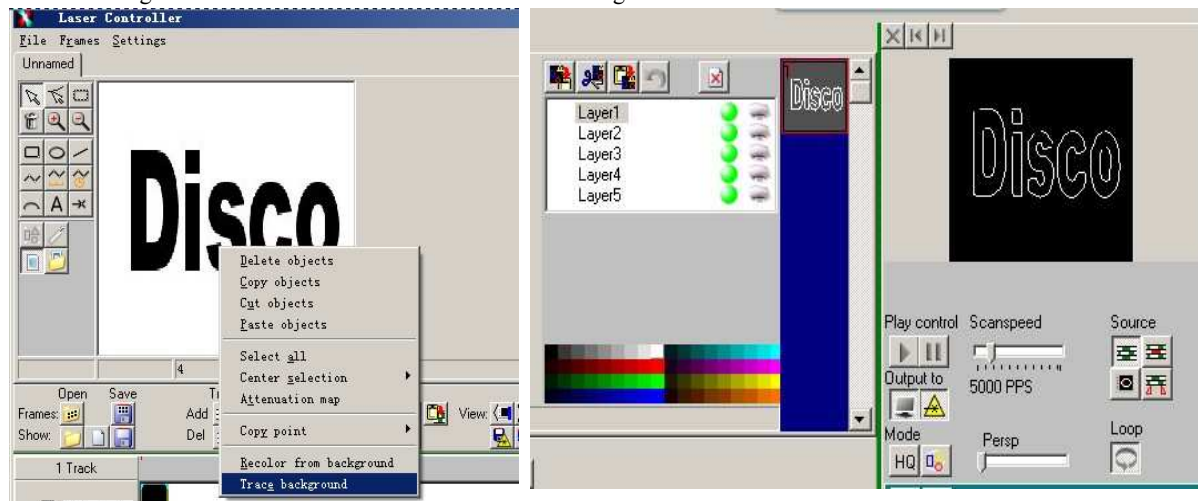
- E. Open the "Laser Controller" software on your desk



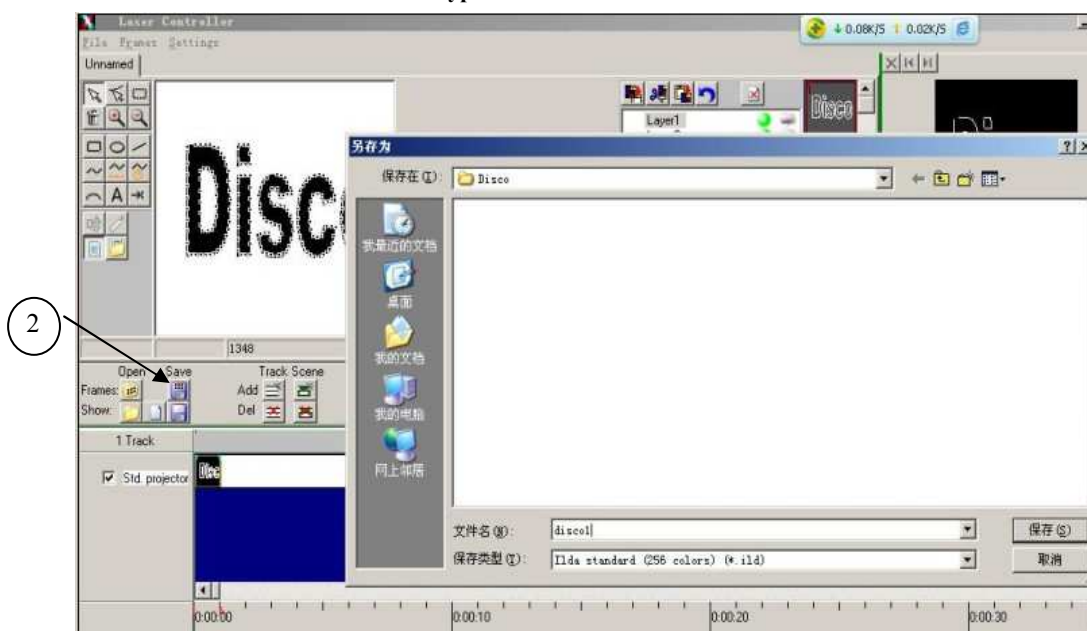
- F. Click the "1" to open the "Disco.bmp"



G. Click the right mouse on the "Disco" and select "Trace Background"

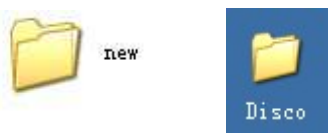


H. Click "Save" to "disco1.ild". The file type must be "256 colors"!



I. Please make other ".ild" files according to the "A-H" steps, such as "disco2.ild", "disco3.ild", etc.

(4). Copy the folder "New" from SD card onto your desk. Rename this folder to "Disco". Copy all the ".ild" files onto this folder, such as "disco1.ild", disco2.ild", "disco3.ild", etc.



(5). Rename the "new.prg" file name to "disco.prg". And open the "Disco.prg" file

**Important: Prg name must be the same as folder name!**



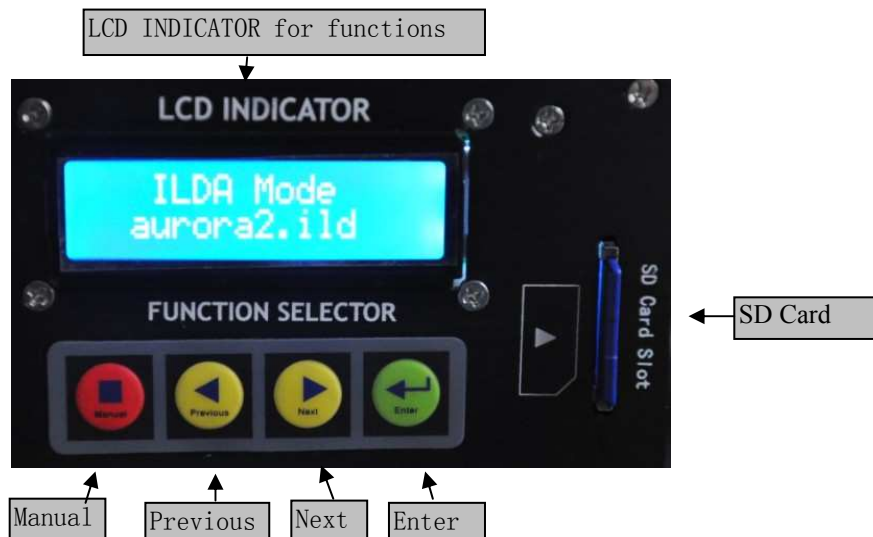
(6). rename the old ".ild" names to new names "disco1", "disco2", "disco3" ..., and save this prg file.

```
Disco1. ILD, 20, 1
Disco2. ILD, 20, 30
Disco3. ILD, 20, 1
```

(7). Copy this folder "Disco" onto the SD card.

## 6. How to operate the laser to display animations?

At the rear panel, you can see:



“Manual” is Menu

“Enter” is confirm

“Previous” is UP

“Next” is down

## Key board operation:

Once powered on, the laser light keeps the same mode as previous use. At this time, please press the “Manual” to the Menu.

The LCD will show “Mode Select” and others as follows:

sd auto show : Automatically search for all the ILDA files.

program Table: To display the program list.

key seek: To press the key board to search the target ILDA files.

audio mode: Sound active mode, to display the pre-built program in the laser show system.

auto mode: Automatically to display the pre-built programs in the laser show system.

dmx mode: To control the laser show system by DMX controller.

system set: To display different color, Sound Active sensitivity etc.

voic control set: “To be set in Main Menu

color set: To be set in Main Menu

## 7. DMX control:

DMX Control Parameter Chart

Channel	Function	Value	Description
CH1	Mode	0~36	Blank out
		37~73	SD card auto display
		74~110	Program Table
		111~146	Manual to select SD files
		147~184	Sound Active Mode
		185~221	Auto Mode
		222~255	Manual mode

CH2	Pattern Select	0~255	Pattern changes: each pattern at each 2 value	In SD card mode, it is for folder selection
CH3	Flashing	0~10	No flash	program Table: select PRG files. Manuel mode: select ILDA files.
CH4	Moving-X	0~125	Manual to left to right moving	
		126~185	Auto left to right or right to left moving	
		186~225	Pattern Auto jump left or right or middle	
		226~245	Auto Jump	
		246~255	Sound Active jump	
CH5	Moving-Y	0~125	Manual to up to down moving	
		126~185	Auto up and down moving	
		186~225	Auto jump, up and down	
		226~245	Auto Jump	
		246~255	Sound Active jump	
CH6	Zoom(+/-)	0~10	No zoom	
		11~100	Manual zoom(+/-)	
		101~150	Auto zoom(+)	
CH6	Zoom(+/-)	151~200	Auto zoom(-)	
		201~255	Auto zoom(+/-)	
CH7	Rolling-X	0~10	No rolling	
		11~100	Manual rolling	
		101~255	Auto rolling	
CH8	Rolling-Y	0~10	No rolling	
		11~100	Manual rolling	
		101~255	Auto rolling	
CH9	Rotation	0	No rotation	
		1~180	Manual rotation	
		181~217	Auto clockwise rotation	
		218~255	Auto counter clockwise rotation	
CH10	Pattern writing	0~74	pattern writing manually	
		75~104	Auto pattern writing (+)	
		105~144	Auto pattern writing (-)	
		145~184	Auto pattern writing	
		185~224	First and last writing cyclely (+)	
		225~255	First and last writing cyclely (-)	
CH11	Wave display	0~9	No wave	
		10~199	Wave speed	
		200~255	Wave angle	
CH12	RGB	0~18	white	
		19~37	red	
		38~56	green	
		57~75	blue	
		76~94	yellow	
		95~113	purple	
		114~132	cyan	
		133~151	White, red, green and blue	
		152~170	Blue, yellow, purple and cyan	
		171~189	White, red, green, blue, yellow, purple and cyan	
		209~227	White, red, green, blue flowing	
		228~246	Blue, yellow, purple and cyan flowing	
		247~255	Blue, yellow, purple and cyan flowing	